

# 32" CHANNEL DRAIN FLAT GRATE ANTI-ENTRAPMENT SUCTION OUTLET COVER AND PVC THREE-PORT MANUFACTURED SUMP



**VGBA CERTIFIED  
SPECIFICATIONS**

**Open Area  
25.9 in<sup>2</sup>**

For SOFA Specific Flow Ratings and specifications please scan QR code or visit [www.aquastarpoolproducts.com/flowcode](http://www.aquastarpoolproducts.com/flowcode)



## FEATURES

Certified, Listed, and Labeled in conformance with APSP/ANSI/ICC-16 2017 and NSF/ANSI/CAN 50 standards

Three ports: bottom 2½" OD, 2" ID S/S; inside 2" threaded FPT; two 2" threaded plugs included

Strong PVC sump does not require transitional glue

Designed for use with 2" hydrostatic relief valve part #HVxxx

Disposable plastic pre-gunite/plaster insert keeps debris out and retains sump shape during construction

#316 stainless steel screws

Manufactured from superior UV-resistant engineered polymers

Online product support including downloadable CAD files, General Certificate of Conformity, third-party certificate, installation instructions and more

Replace drain cover every five years from the date of installation

4 per case

NOTICE: White assemblies will come with a white PVC sump, all other colors are shipped with a medium gray sump

U.S. Patent [www.aquastarpoolproducts.com/patents](http://www.aquastarpoolproducts.com/patents)

## Unblockable!

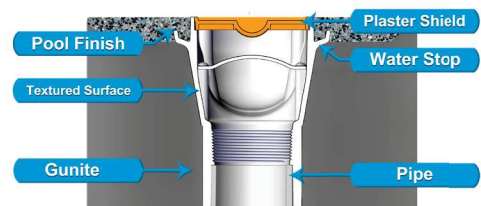
No second drain or SVRS required  
Cover conceals existing sump



**NEW**

Optional 2" hydrostatic relief valve available p/n HVK101

### Water Stop and Textured Sump



With sump (concrete pools)  
Part # 32CDFLxxx

### STANDARD COLORS

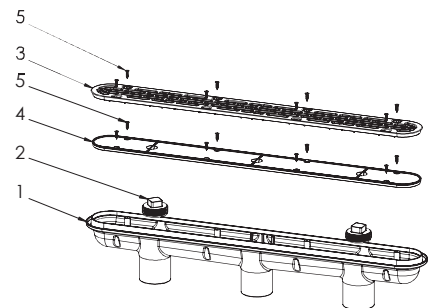
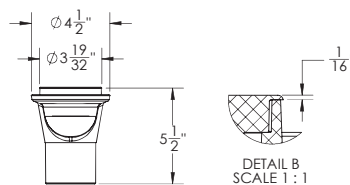
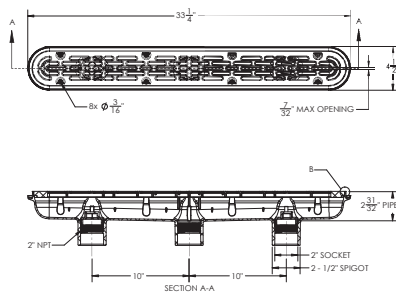
- 32CDFL101 – White
- 32CDFL102 – Black
- 32CDFL103 – Light Gray
- 32CDFL105 – Dark Gray

Also available sump and screws only, p/n 32CDPKxxx  
4 per case

Also available as plaster shield only, p/n PS109  
10 per case

Also available cover and screws only, p/n 32CDFLNFKxxx  
20 per case

**VGBA 2017 Compliant**



1. 32" PVC 3-Port Sump
2. 2" NPT Plug, Qty 2
3. 32" Channel Drain, Cover, Flat
4. 32" Channel Drain, Plaster Shield
5. #10 x .75" Flat Head Phillips Screw, 316 SS, Qty 16

**Note:** Plaster Shield and Screws to be removed after Gunite/Plaster application.

P 877-768-2717 F 877-276-POOL Outside the US: P +1-949-336-1940 F +1-949-336-1940  
info@aquastarpoolproducts.com www.aquastarpoolproducts.com CS020-013125