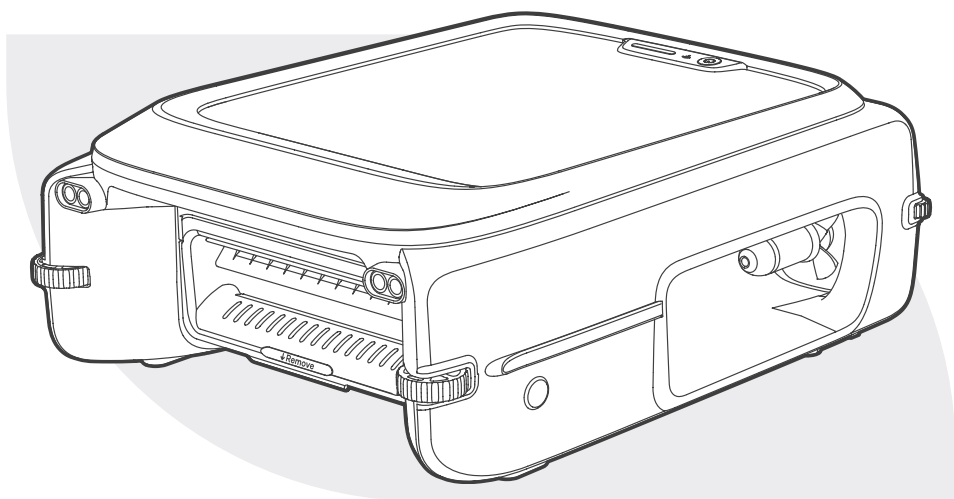


AIPER®



Aiper EcoSurfer P1

Robotic Pool Skimmer
Écumoire De Piscine Robotisé

USER MANUAL / MANUEL D'UTILISATION

CONTENTS / SOMMAIRE / CONTENIDOS

EN	User Manual -----	1
FR	Manuel d'utilisation -----	27
ES	Manual de usuario -----	54

EN

Thank you for choosing Aiper.

You've now joined millions who have already trusted Aiper to care for their pools and are enjoying the convenience of a pristinely clean pool.

This user manual will help you maintain your device and ensure it performs at its maximum efficiency for years to come. Please take a moment to read through it.

If you have any questions, please visit our website at www.aiper.com and contact our customer service team for assistance or more information.

Aiper Customer Service:

Country	Toll Free Number	Language
US	+18668500666	English
CA	+18668500666	English
AU	+611800497023	English

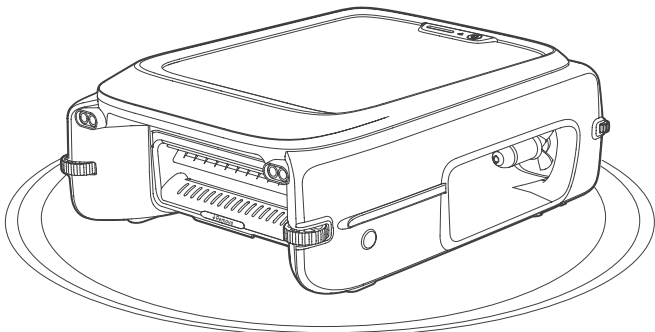
 Email: service@aiper.com



Scan for
Video Guide



Scan the QR
Code to Access
Customer Support



1. IMPORTANT SAFETY INSTRUCTIONS

Please read this manual carefully and follow all warnings and instructions when using your Aiper Robotic Pool Skimmer (hereinafter referred to as *device*). Failure to comply may result in electric shock, fire, or serious injury. Aiper is not liable for any losses or injuries caused by improper use of this device.

For your safety and the optimal performance of this device, please read and follow these instructions:

1. READ AND FOLLOW ALL INSTRUCTIONS

2. This device can be used by children aged from 8 years and above and persons with reduced physical, sensory or mental capabilities or lack of experience and knowledge if they have been given supervision or instruction concerning use of the device in a safe way and understand the hazards involved.
3. **WARNING:** To reduce the risk of injury, do not permit children to use this product unless they are closely supervised at all times.
4. Ensure that children do not attempt to touch the device while it is operating.
5. Do not allow children to ride the device under any circumstance.
6. Do not operate the device with people or animals in the pool.
7. While operational, do not place your hands into any part of the device as this may result in injury.
8. Prevent unintentional starting. Ensure the power button is off before connecting to the battery pack, picking up, or carrying the device. Carrying the device with your finger on the power button or energizing the device with the power button on invites accidents.

9. Do not run your device out of the water as it may lead to over-heating.
10. A charger that is suitable for one type of battery pack may create a risk of fire when used with another battery pack.
11. This device can only be used with HYY0345237 model lithium battery packs.
12. This device contains batteries that are non-replaceable. When the battery is at end of life, the device shall be properly disposed of.
13. In the event a damaged device produces an unfamiliar liquid, avoid contact with the liquid. If coming into contact with a foreign liquid, especially the eyes or other sensitive parts, immediately flush with water. Liquid ejected from a damaged battery may cause skin irritation or burns.
14. Do not use a battery pack or device that is damaged or modified. Damaged or modified batteries may exhibit unpredictable behavior resulting in fire, explosion, or risk of injury.
15. Do not expose a battery pack or device to fire or excessive temperature. Exposure to fire or temperature above 265°F (130°C) may cause explosion.
16. Follow all charging instructions and do not charge the battery pack or device outside of the temperature range specified in the instructions. Charging improperly or at temperatures outside of the specified range may damage the battery and increase the risk of fire.
17. **WARNING:** Risk of Electric Shock. Connect only to a grounding type receptacle. If replacement of the plug or cord is needed, use only identical replacement parts.
18. **CAUTION:** To reduce the risk of electric shock the pool must be installed no closer than 6 feet (1.8 m) from any electrical outlet. Do not place portable devices closer than 5 feet (1.5 m) from the pool.
19. Ensure your device is turned off and the charging port is dry before charging with the charger. While charging, your device should be kept in a cool, well-ventilated area. Do not cover

your device while charging, as this may cause components to overheat.

20. **WARNING:** To reduce the risk of electric shock, do not use an extension cord to charge your device and instead only charge is via a dedicated wall outlet.
21. **WARNING:** To reduce the risk of electric shock, replace damaged cord immediately.
22. If the power cord is damaged, it must be replaced or repaired by a qualified electrician or Aiper Customer Care to avoid any hazards.
23. Only certified professionals should disassemble the sealed drive kit of your device.
24. Your device should only be serviced by a qualified technician using official replacement parts.
25. Do not operate your device simultaneously with any other pool equipment, such as a pool filter, cleaner, or skimmer.
26. When putting your device into the water, the front of the device must face upwards and should never be placed upside down or thrown into the swimming pool.
27. Watch your steps and maintain balance when working near the poolside.
28. Do not drop, pierce the shell, or intentionally damage the device in any way, as this may void your warranty.
29. Ensure the device is turned off while not in use or while performing maintenance.
30. When not in use, store the device indoors, in a cool, well-ventilated area.
31. **CAUTION:**
 - FOR USE WITH SWIMMING POOLS ONLY.
 - DO NOT RUN PUMP DRY.
 - TO REDUCE THE RISK OR INJURY, USER MUST READ MANUAL.
 - FOR USE ONLY WITH AUTHORIZED AIPER CHARGER, MODEL: GQ12-126100-HU.

SAVE THESE INSTRUCTIONS

FCC Statement

This device complies with Part 15 of the FCC Rules. Operation is subject to the following two conditions: (1) This device may not cause harmful interference, and (2) this device must accept any interference received, including interference that may cause undesired operation.

Warning: Changes or modifications not expressly approved by the party responsible for compliance could void the user's authority to operate the equipment.

Note: This equipment has been tested and found to comply with the limits for a Class B digital device, pursuant to Part 15 of the FCC Rules. These limits are designed to provide reasonable protection against harmful interference in a residential installation.

This equipment generates, uses, and can radiate radio frequency energy and, if not installed and used in accordance with the instructions, may cause harmful interference to radio communications. However, there is no guarantee that interference will not occur in a particular installation. If this equipment does cause harmful interference to radio or television reception, which can be determined by turning the equipment off and on, the user is encouraged to try to correct the interference by one or more of the following measures:

- (1) Reorient or relocate the receiving antenna.
- (2) Increase the separation between the equipment and receiver.
- (3) Connect the equipment into an outlet on a circuit different from that to which the receiver is connected.
- (4) Consult the dealer or an experienced radio/TV technician for help.

Radiation Exposure Statement:

1. This device complies with FCC radiation exposure limits set forth for an uncontrolled environment.
2. This device should be installed and operated with minimum distance 20cm between the radiator & your body.

Importer: Aiper Intelligent, LLC.

Address: 8735 Dunwoody Place, STE 6, Atlanta, Georgia 30350,
USA (Not for Returns)

US Toll-Free: +18668500666

AU Toll-Free: +611800497023

ISED Statements

This device complies with Innovation, Science and Economic Development Canada license-ICES-003. Operation is subject to the following two conditions: (1) This device may not cause interference, and (2) This device must accept any interference, including interference that may cause undesired operation of the device.

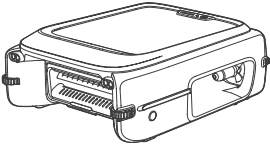
CAN ICES-003 (B)/NMB-003(B)

Radiation Exposure Statement:

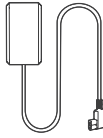
1. This device complies with ISED radiation exposure limits set forth for an uncontrolled environment.
2. This device should be installed and operated with minimum distance 20cm between the radiator & your body.

2 Product Components

2.1 Package Contents



Skimmer × 1



Charger × 1

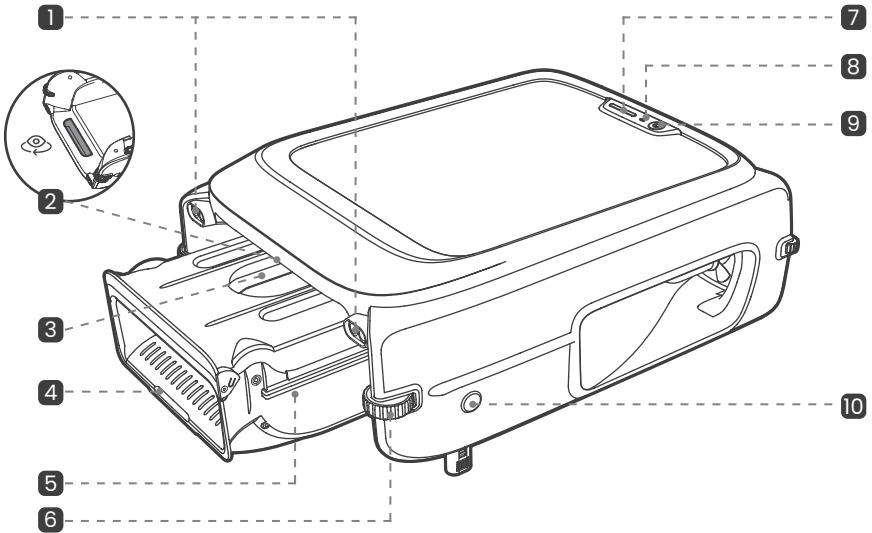


User Manual × 1



Foam Noodle × 1

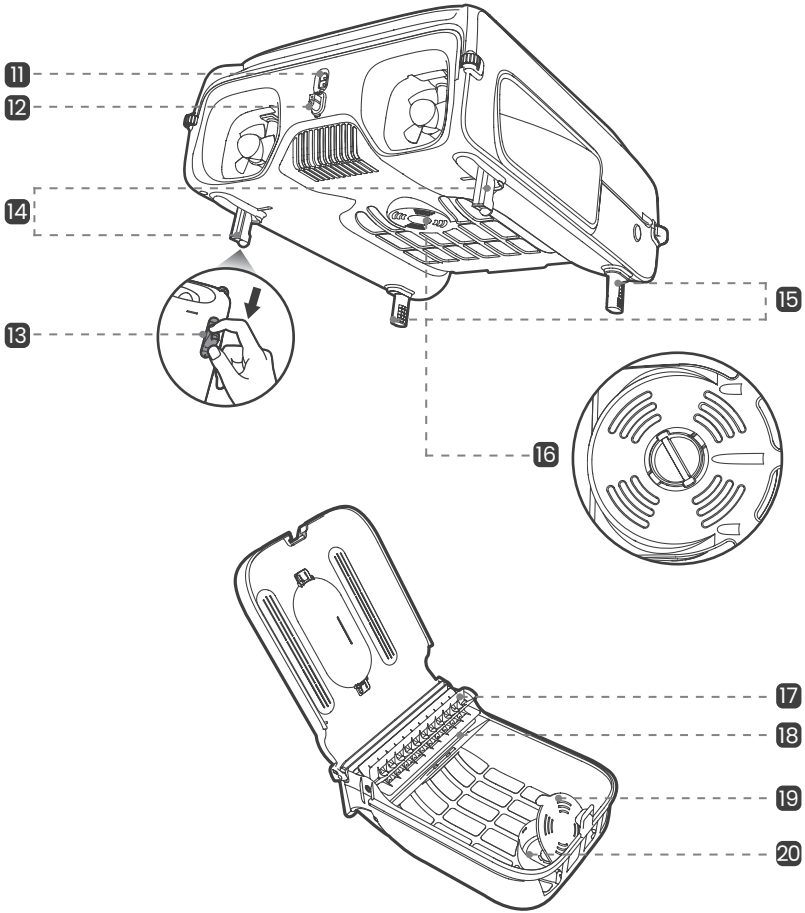
2.2 Component Overview



Skimmer (Side View)

- | | |
|----------------------------|-------------------------------|
| 1 Sensor | 6 Guide Wheel |
| 2 Handle | 7 LED Status Indicator |
| 3 Filter Box Handle | 8 Wi-Fi Indicator |
| 4 (Remove Filter Box Here) | 9 ⏻: Power Button |
| 5 Filter Box | 10 Anti-stranding Bars Switch |

Skimmer (Rear View)



Filter Box

- | | |
|--|-------------------------------------|
| 11 Charging Port | 16 Chlorine Tablet Dispenser |
| 12 Silicone Plug | 17 Impeller |
| 13 Anti-Stranding Bar Handle Position | 18 Overflow Guard |
| 14 Rear Anti-Stranding Bar × 2 | 19 Chlorine Tablet Box Lid |
| 15 Front Anti-Stranding Bar × 2 | 20 Chlorine Tablet |

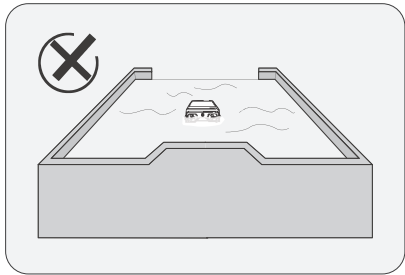
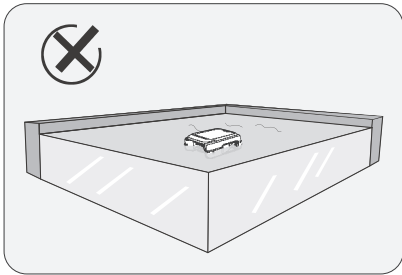
3 How to Use Your Aiper EcoSurfer P1

3.1 Operating Conditions

Please ensure the device is only used within the specified pool environments. Damage resulting from use outside these conditions will not be covered under warranty.

• Water Temperature: 50-104°F (10-40°C)
• pH Value: 7.0-7.8
• Chlorine: Maximum 4 ppm
• NaCl: Maximum 5000 ppm

- This device is intended only for cleaning pool water surfaces only.
- This device works for most swimming pools but is not recommended for glass or infinity pools.



3.2 Downloading App

Download the Aiper App to unlock more features for your device:


You can download and install the Aiper App by scanning the QR code below or by searching for Aiper in your app store.



Notes:

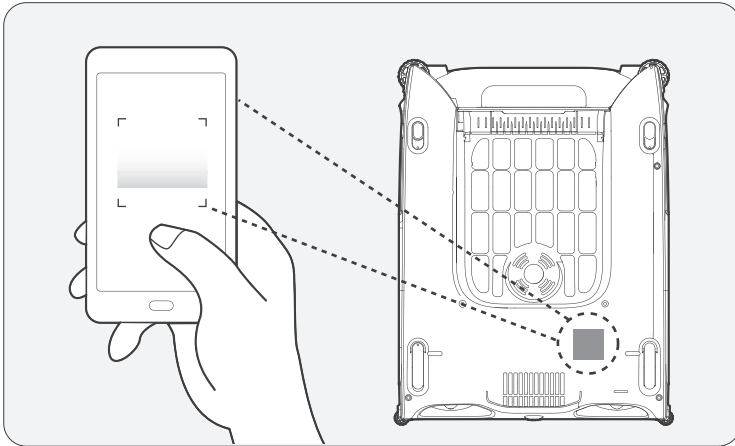
- iOS 12.0 or later, or Android 8.0 or later is required for full App functionality on your smartphone or device.
- Once installed, follow the app's instructions to complete registration, login, and network setup.

3.3 Network Setup

When first powering on the device, it will enter Network Setup Mode. If this process is interrupted, press the  button for 5 seconds to re-enter Network Setup Mode.

Once in Network Setup Mode, please select either Bluetooth Setup or QR Code Setup.

- **Bluetooth Setup:** Enable Bluetooth on your phone and grant access to the Aiper App. In the app, tap the [+] symbol in the top right corner, then select *Add via Bluetooth*. The App will detect nearby Bluetooth devices. Select your network, enter the Wi-Fi password, and tap Next to finish network setup.
- **QR Code Setup:** Open the App and tap the [+] in the top right corner, then select *Add via QR Code*. Scan the QR Code located on your Aiper device. When the device is recognized, follow the app's instructions to connect to the device's Wi-Fi. Once connected, return to the app and follow the prompts to complete the network setup.



Wi-Fi Network Requirements:

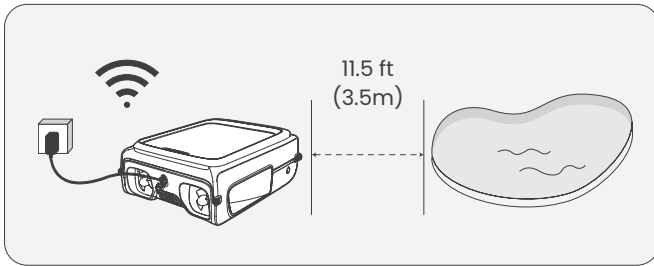
Use a 2.4 GHz network or a dual-band network (2.4 GHz and 5 GHz).

3.4 Charging

CAUTION:

Please fully charge the device before using it to clean the pool.

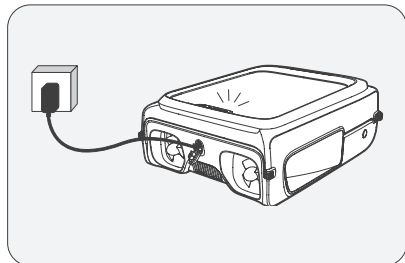
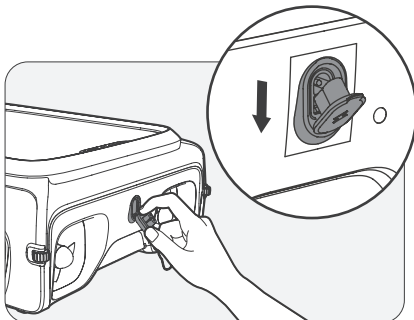
It's advised that a minimum distance of 11.5 ft (3.5m) separates your pool and charging location. For the best results, your charging location should have Wi-Fi coverage, as this will expedite OTA updates.




Before charging, remove the silicone plug and ensure the charging port is dry. If there's any water or dampness in the port, wipe it dry with a clean cloth before charging your device.

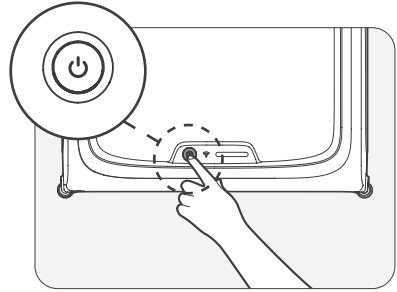
Charging Options:

- **Solar Charging:** Your device will automatically charge while on or off, as long as there is ample sunlight.
- **Plug-in Charging:** If sunlight is insufficient, use the provided DC charger. Connect the charger to the device's charging port, then plug the charger into any available outlet. The LED status indicator will pulse during charging and turn solid green when fully charged.

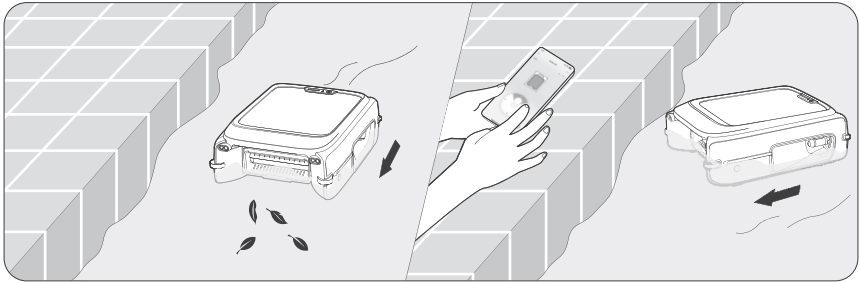


3.5 Cleaning Process

- Press and hold the  Button for 2 seconds to turn on/off the device. The device's default mode is set to *Auto Mode*. Use the Aiper App to switch cleaning modes.



- After turning on the device, its propeller will start, and the device will enter Auto Mode. In this mode, once in the water, the device will automatically begin cleaning the pool, continuously charging with ample sunlight via the solar panel.
- Using the App's Remote Control Mode allows user to manually pilot the device forward, backward, left, and right for targeted cleaning, ensuring a more thorough and efficient pool cleaning. This mode is also great for returning your device to the pool edge for easy retrieval.



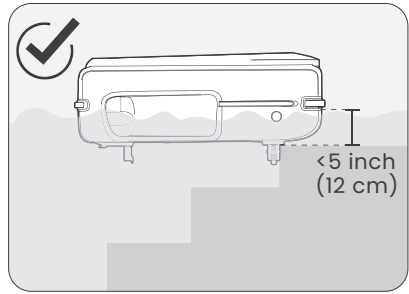
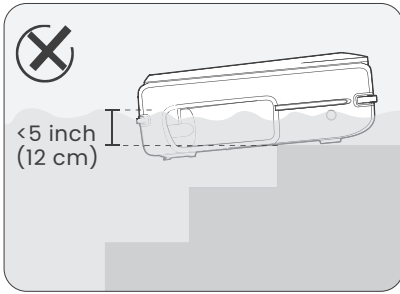
- When the device's battery is low, the LED status indicator will turn blue. During this time, the device will operate intermittently. Once recharged, the device will resume normal cleaning. If there is low sunlight, the device may shut down, recharging and continuing normal cleaning when ample sunlight returns.

3.6 Using Anti-Stranding Bars

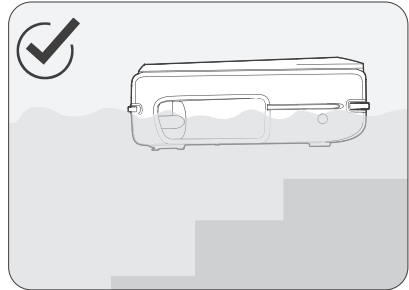
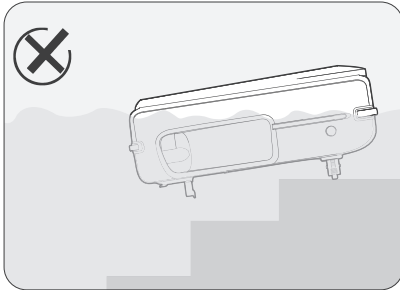
If your pool has structures or obstacles near the water's surface, such as steps, sun bathing areas, etc., your device may become stuck in these areas. Deploy the anti-stranding bars if you feel your device runs the risk of becoming grounded, these bars will prevent the device from getting stuck on these or similar obstacles.

Notes:

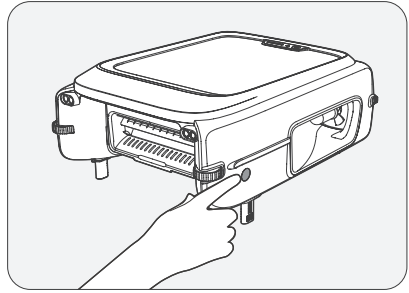
- Typically, when the height difference between the obstacle and the water surface is less than 5 inch (12cm), you should lower the anti-stranding bars.



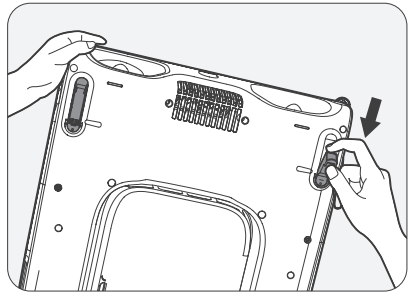
- If lowering the anti-stranding bars causes the device to get stuck, it indicates that the bars are not needed for your pool. Retract the bars in this situation.



- To extend the anti-stranding bars at the front of the device, press the anti-stranding bar switch on the front part of the bottom cover. The bars will automatically pop out and can be adjusted to the desired length. To retract them, press and hold the relevant button and push up on the bottom of the bars until they are locked into place.



- The anti-stranding bars at the rear of the device can be pulled out from the handle position until they are vertical; to retract them, just push them back into place.



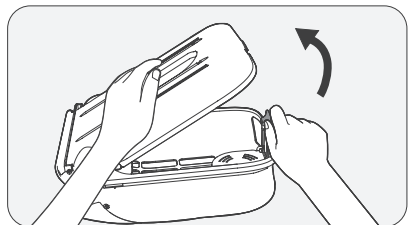
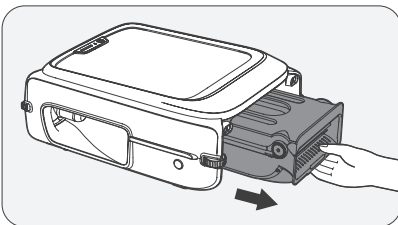
- Each time you use the anti-stranding bars, make sure to extend both the front and rear bars simultaneously to keep them balanced.

3.7 Using Chlorine Tablet Box

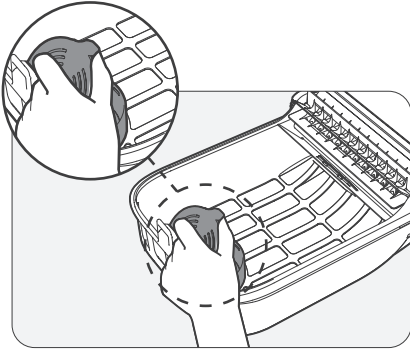
To adjust your pool's water quality, place chlorine tablets in the device's tablet box. Set the tablet dispenser rate to begin the water quality balancing process.

1. Place the device on a flat surface and remove the filter box.

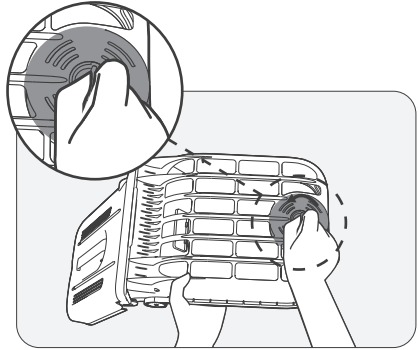
2. Push the filter box latch outward while lifting the top cover of the filter box.



3. Open the chlorine tablet box lid, place the chlorine tablets inside, and close the lid.



4. Flip the device over and adjust the chlorine tablet dispenser at the bottom.

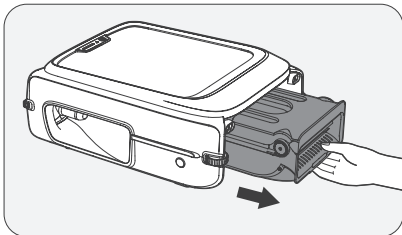


4 Maintenance

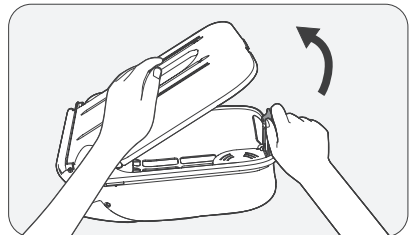
4.1 Cleaning the Filter Box

Note: To maintain optimal performance, clean the filter box every 2-3 days.

1. Place the device on a flat surface and remove the filter box.



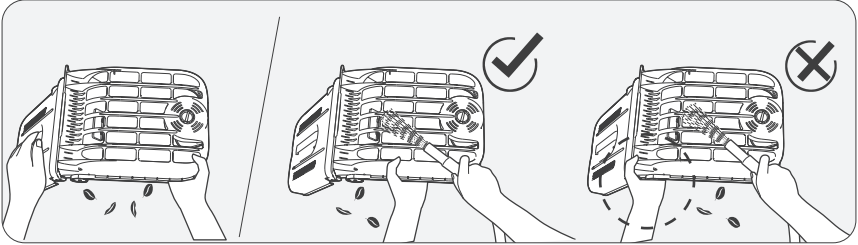
2. Push the filter box latch outward while lifting the top cover of the filter box.



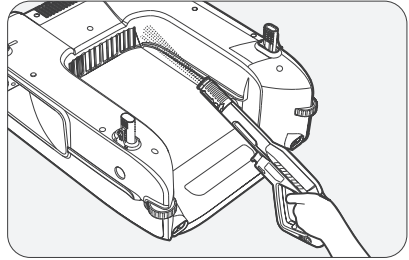
CAUTION: When opening the filter box, keep the suction port upright to prevent collected debris from spilling out.

3. Empty the filter box and rinse it with water.

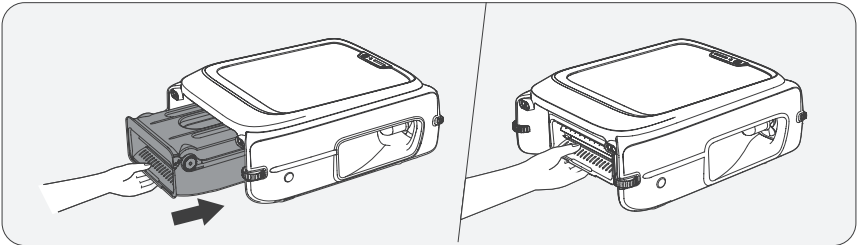
CAUTION: Keep hands clear of the pinch point while rinsing.



4. Use a high-pressure water gun to clean the guides, preventing debris from accumulating, potentially affecting performance.



5. Slide the filter box back into the device along the guides until you hear a click, indicating that the filter box is securely in place.

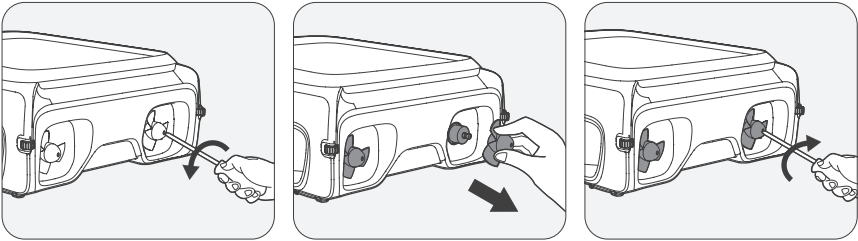


4.2 Cleaning the Propeller

1. If the propeller becomes tangled with debris, make sure the device is turned off. Use a screwdriver to remove the screw securing the propeller, then clean the blades.

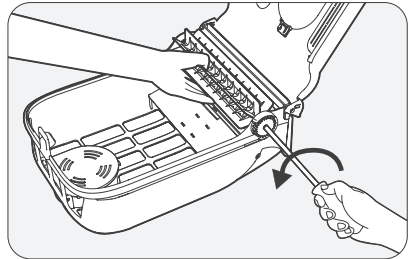
2. After cleaning the propeller's blades, reattach the blades to their original position.

Note: Assemble the left and right side propellers according to the "L" and "R" markings on the blades.

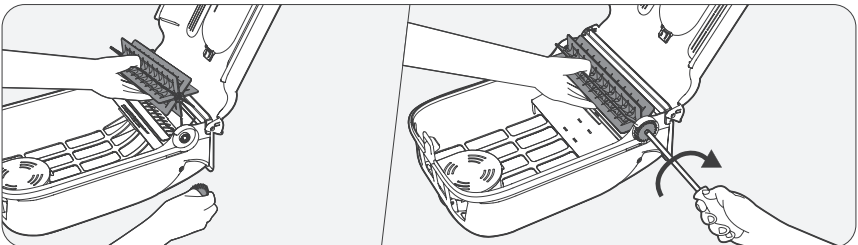


4.3 Cleaning the Impeller

1. Use a screwdriver to remove the screws on the side of the impeller.



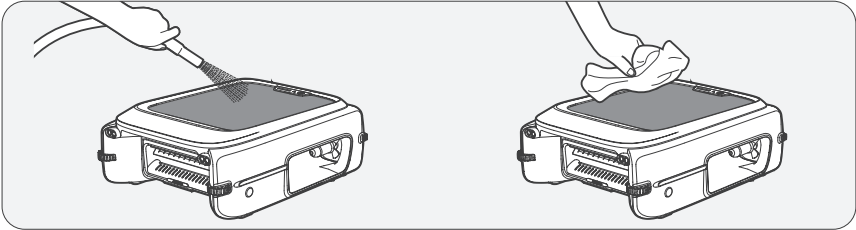
2. Remove the gear and impeller, clean any debris, and then reinstall them.



4.4 Cleaning the Solar Panel

You may notice some white residue on the solar panel, this is normal, and caused by chemicals and minerals in the pool water. Rinse the panel with clean water and wipe it dry with a soft cloth.

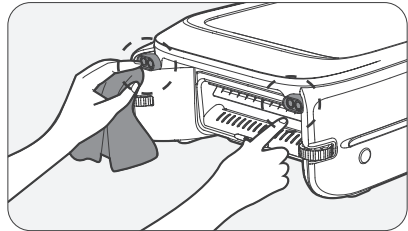
Note: To ensure optimal charging efficiency, it is recommended to clean the solar panel every week.



WARNING: Avoid using a high-pressure water gun or abrasive tools on the solar panel, as this may damage the panel and void the warranty.

4.5 Cleaning the Sensor

Use a soft, dry cloth to clean the sensor lens to keep it free from dust.










4.6 Powering Off and Storing Your Aiper

During off-seasons, such as winter or long vacations, when your Aiper device isn't in use, follow these steps to keep it in top shape:


1. Fully charge the device before storing it. Ensure the device is turned off and disconnected from the charger before storing.
2. Thoroughly clean the entire device, including the top and bottom shells, wheels, brushes, and charging port to remove any dirt.
3. Dry the device with a tissue or soft cloth, and ensure the silicone plug for the charging port is properly closed.
4. Store the device in its original packaging in a cool, dry, and well-ventilated place.
5. Recharge the battery every six months to maintain its health.

5 Specifications

Model: SKS2P
Rated Input: 12.6V = 1.0A
Charger Model: GQ12-126100-HU
Charger Input: 100-240V ~, 50/60Hz, 0.4A
Charger Output: 12.6V = 1A
Charging Time: 6 Hours
Battery Pack Life: 30+ Hours
Battery Pack Capacity: 5200mAh (56.16Wh)
Battery Pack Voltage: 10.8V=
Water Protection Rating: IPX8

	Direct current.
	Alternating current.
	Class II equipment.
	Switch mode power supply.
	Polarity of d.c. power connector.
	Short-circuit-proof safety isolating transformer.
	For indoor use only.

6 LED Indicator

Device Status Indicators	Device Status	Status Description
LED Status Indicator	Pulsing Red	Charging
	Pulsing Blue	
	Pulsing Green	
	Solid Green	Charging complete.
	Pulsing Yellow	To Reset Your Device: Hold the  button for ten seconds. Your device will then be restored to its factory settings.
		OTA in Progress: Your device is automatically updating to the latest firmware.
	Flashing Red	Propeller/Impeller malfunction or device is stuck.
	Solid Red	Low battery. Automatic shutdown soon.
Solid Blue	Sun-Seeking.	
Solid Green	Operating normally.	
LED Status Indicator	Pulsing Green	Connecting to Wi-Fi.
	Flashing Green	The device is not connecting to the Internet. Please follow the troubleshooting instructions on the App's setup page.
	Solid Green	Wi-Fi Connected.
	Off	Wi-Fi Disconnected.

7 Troubleshooting

NO.	Malfunction	Possible Causes	Solutions
1	Propeller abnormal noise during operation.	To ensure water safety, the device uses lubricant-free graphite alloy shaft. The abnormal noise is a normal physical phenomenon caused by shaft dry friction and is not a malfunction.	The noise will disappear once the device is submerged in water, and will not affect device's performance or lifespan.
2	Propeller cannot spin normally.	The propeller is not fitted properly.	Reinstall the propeller and press it firmly until you hear a click to ensure proper installation.
		<ul style="list-style-type: none"> 1) Debris stuck on the propeller blades. 2) Debris or dust accumulated on the shaft. 3) Mineral build-up after long-term usage. 	<ul style="list-style-type: none"> 1) Remove and clean the propeller. Rinse the shaft with water and wipe it dry. Reinstall the propeller once all debris has been cleared. 2) Routine maintenance is recommended after 15 days of operation. 3) Clean the device thoroughly before long-term storage.
3	Device doesn't turn on.	Insufficient battery power.	Fully charge the device before attempting to clean your pool.
		Battery temperature too high/low.	Only operate the device in an environment between 50°F (10°C) and 104°F (40°C).

NO.	Malfunction	Possible Causes	Solutions
4	Device not charging.	Charger is damaged or not powered.	Check if the charger is securely connected and if the indicator light on the charger is lit. If the plug is properly connected but the light is off, the charger might be faulty. Please contact Aiper customer service.
		Battery temperature too high/low.	Only operate the device in an environment between 50°F (10°C) and 104°F (40°C).
		Extended non-use of the device has caused the battery to discharge.	Follow the <i>Powering Off and Storing Your Aiper</i> section in the <i>Maintenance</i> guide for proper storage of the device. If the device won't charge due to extended non-use, please contact Aiper customer service.
5	Device doesn't avoid obstacles.	Sensor lens is dirty.	Use a soft, dry cloth to clean the sensor lens to prevent obstructions. If the issue persists, please contact Aiper customer service.
		Device is in edge cleaning mode.	Slightly bumping into walls is normal and part of the cleaning process. However, if the issue persists after 10 minutes, please follow the steps troubleshooting <i>Sensor lens is dirty</i> .

NO.	Malfunction	Possible Causes	Solutions
6	The device continuously moves backward in open areas.	Sensor lens is obscured by fog.	Use a tissue or soft, dry cloth to clean the sensor lens. If the issue persists, please contact Aiper customer service.
7	Device spins in circles.	If the LED status indicator is flashing red, the propeller may be jammed.	Check the Aiper App for any fault notifications. If any faults are detected, stop the device and refer to Maintenance section for the <i>Cleaning the Propeller</i> .
		Sensor lens is dirty.	Use a soft, dry cloth to clean the sensor lens to prevent obstructions. If the device continues to spin after cleaning, the sensor may be faulty, please contact Aiper customer service.
8	Impeller not spinning during cleaning.	The filter box may not be properly installed.	Reinstall the filter box by sliding it along the guides until you hear a click, ensuring the part is securely in place.
		Impeller may be jammed.	Check the Aiper App for any fault notifications. If there are any, stop the device and refer to Maintenance, paying special attention to the <i>Cleaning the Impeller</i> section.

NO.	Malfunction	Possible Causes	Solutions
9	Decreased cleaning performance.	Filter box is full.	Please empty and thoroughly clean the filter box.
		Filter is clogged.	Please rinse the filter with a high-pressure water gun.
10	Device has stopped working.	If the LED status indicator turns off, it usually indicates low battery power.	Usually indicates low battery power. No action is required; the device will automatically charge and resume operation with ample sunlight. For quicker charging, remove the device from the pool and use the provided DC charger.
		If the LED status indicator is flashing red, the propeller or impeller may be jammed.	Check the Aiper App for any fault notifications. If any are found, stop the device and refer to the <i>Maintenance</i> section for <i>Cleaning the Propeller and Cleaning the Impeller</i> .
		If the LED status indicator is pulsing blue, it means the device has a low battery and is charging using sunlight.	No action is required; the device will automatically continue operating with ample sunlight.

NO.	Malfunction	Possible Causes	Solutions
11	Device stuck while cleaning.	Device stuck in pool's built-in skimmer.	Reduce the suction power or turn off the pool's skimmer completely while using the device. Also, you may attach a foam noodle (included) to the front of the skimmer.
		Device is stuck on steps, sun bathing area, or other obstruction.	Adjust the device's built-in anti-stranding bars. For details, refer to <i>Using Anti-Stranding Bars</i> .
		Device is tangled or stuck.	It is not recommend to use the skimmer and a robotic pool cleaner simultaneously. If the device gets stuck, it will attempt to free itself automatically. If it fails to do so, you can use the Aiper App's remote control mode to maneuver the skimmer out of the stuck area, or use a hook (included) attached to a pole to remove it.
12	Monitor charging status.	Plug-in Charging.	The LED status indicator will pulse while charging. For details, see <i>LED Indicator</i> . When charging is completed, the LED status indicator will turn solid green.
		Solar Charging.	You can check the battery icon in Aiper App. If it shows a sun symbol, the device is charging.

8 Warranty

This product has passed quality control and safety test conducted by our technicians.

1. This product comes with a 24-month warranty that covers your item's battery and motor from the date of purchase.
2. This warranty is voided if the product has been altered, misused, or has been repaired by unauthorized persons.
3. This warranty extends only to manufacturing defects and does not cover damage resulting from the mishandling of the product by the owner.
4. The order number or record of purchase must be presented at the request of any repair claim during the warranty period.



This symbol indicates that this product shall not be treated as household waste. Instead it shall be handed over to the applicable collection point for the recycling of electrical and electronic equipment.