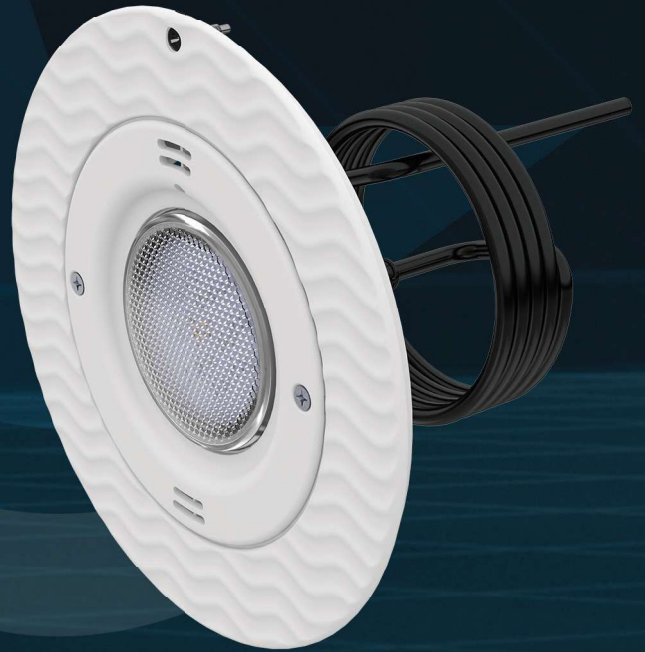


Lite Star[®]

Pool and Spa LED Lights with Adjust-A-Beam[®] Technology



New construction with or without bonding options



Pool and spa light retrofit options



Quick-Connect Plug

Sold separately



Advanced Cooling

Ensuring lasting performance



Adjustable Tilt

20-degree adjustable

877-768-2717 - www.aquastarpoolproducts.com

All rights reserved. Copyright © AquaStar 2026 - SS039-012426

AQUASTAR[®]
pool products 



Lite Star®

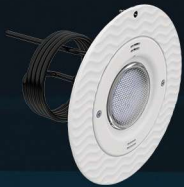
Adjustable Pool and Spa LED Lights



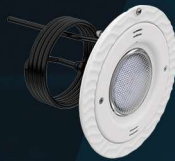
RETROFIT KITS AVAILABLE FOR THE FOLLOWING APPLICATIONS

10" and 8" models feature Adjust-A-Beam® technology

10" Large Pool
Light Niches



8" SwimQuip
Light Niches



6" Small Spa
Light Niches



Spectrum 360
Light Niches



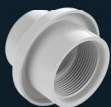
FEATURES

- Adjustable lens up to 20° for reduced glare and even light distribution
- Integrated liquid cooling and automatic dimming help control heat
- Dimmable for precise lighting control
- 12V LEDs available in RGBW (17W), White (9W), and Blue (9W)
- Quick-connect cord sold separately in 50', 100', and 150' lengths
- Faceplate options: White, Light Gray, and Dark Gray



For ordering information
and additional specs,
please scan the QR code

NICHELESS LED LIGHT



Includes White and
Light Gray wall fitting

FEATURES

- Installs into standard 1.5" return — no niche required
- Comes with wall fitting, fits over 1.5" and inside 2"
- Built-in thermal management to protect LEDs
- Sealed, durable housing for long-term reliability
- Energy-efficient and automation compatible
- Easy service — no pool draining required
- 12V (8W) LED available in RGBW, White, and Blue