

J&J Electronics™

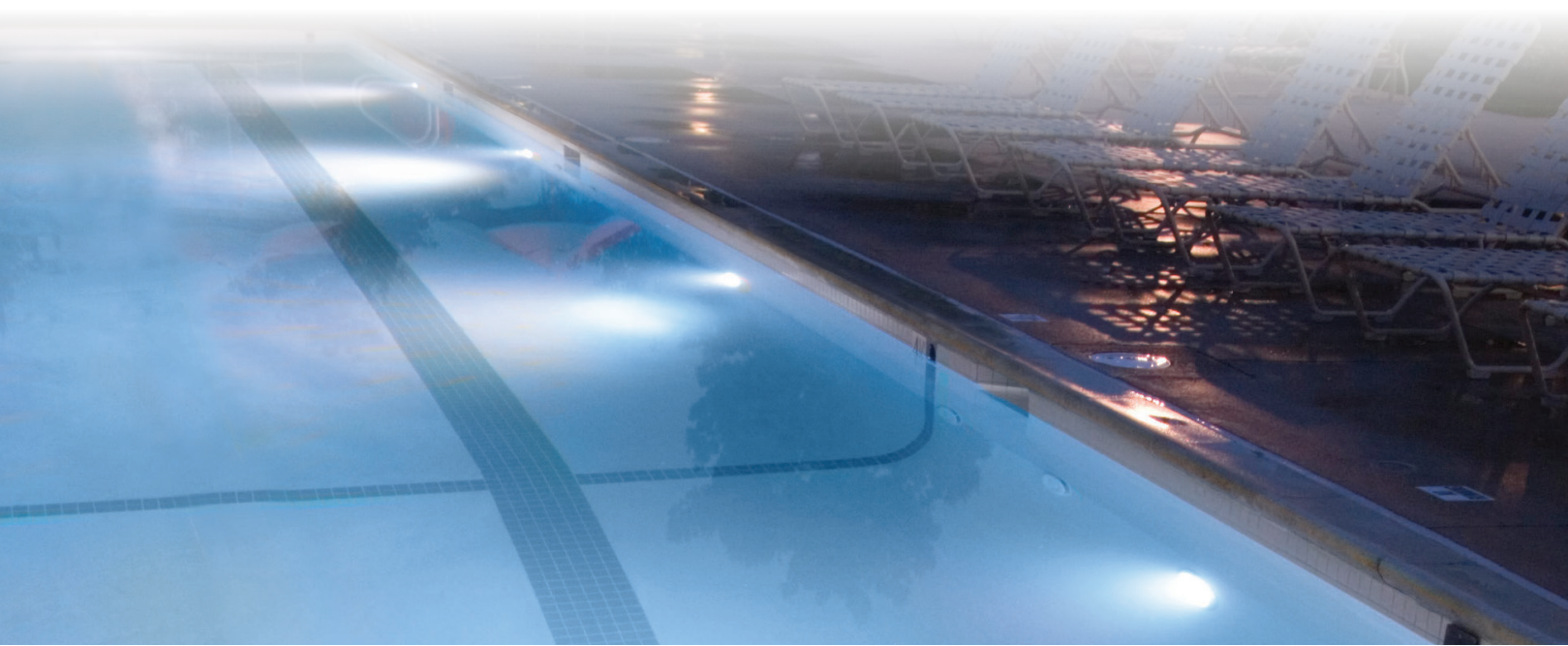
A photograph of a modern, two-story house at night. The house has a dark roof and large windows that are brightly lit from within, casting a warm glow. The house is surrounded by lush tropical landscaping, including various plants and trees. In the foreground, there is a swimming pool with a stone-tiled edge. The pool water is dark blue, and the surrounding area is lit with warm, ambient lighting. The overall scene is a high-quality, professional photograph used for a brochure or advertisement.

Transforming

Pool, Spa and Fountain Lighting
through LED Technology

What makes J&J Electronics So Different?

J&J Electronics is an innovative and dynamic company that was founded in 1982 as a technology company. It has evolved into one of the leading LED Pool and Spa Lighting companies providing high-quality, competitively priced LED lighting to the commercial and residential pool markets. In-house design, engineering, and manufacturing have allowed J&J Electronics to develop cutting edge products that offer uncompromising quality and unparalleled, feature-driven performance. ColorSplash® multi-color Pool & Spa Lamps and Fixtures along with PureWhite® Pool & Spa Lamps and Fixtures have grown to become industry-leading, trusted brands in both the residential and commercial pool marketplace nationwide.



ColorSplash®



Table of Contents

Page 3-5 ColorSplash LED Pool and Spa Fixtures and Lamps
Page 6-8 PureWhite LED Pool and Spa Fixtures and Lamps
Page 9 Traditional Pool Fixtures, Pool Transformers, and Accessories
Page 11-15 Fountain Luminaires

Multi-Color Plus White In-Ground LED Pool and Spa Lighting Fixtures

J&J Electronics' Color Splash® Series of in-ground pool and spa fixtures and lamps offer a variety of lighting colors and shows. With five solid color and seven lights shows, instantly transform any pool or spa into a custom illuminated paradise. Color Splash® Series fixtures and lamps operate with a standard pool light switch, J&J Electronics' XG Controller or can be integrated into most Pentair® and Jandy® automation systems; enabling a "one touch" color show selection. Our VU 1.5" nicheless pool and spa fixtures are also available as part of the ColorSplash® fixture series. These versatile fixtures easily retrofit into most 1.5" wall fittings.

ColorSplash Fixture Advantages:

- RGB and RGB-W models available
- Operates with most manufacturers automation systems
- Zero Pixelation Lens provides fuller, richer color*
- Heavy Duty 316 Stainless Steel Construction*
- Advanced processor delivers seamless color transitions
- Industry leading 3-year limited warranty
- Designed, engineered and assembled in the USA

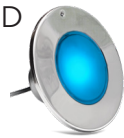
ColorSplash Lamp Advantages:

- RGB and RGB-W models available
- Operates with most pool automation systems
- Preset with 5 solid colors and 7 light shows
- Zero Pixelation Lens provides fuller, richer color*
- Compatible with most manufacturers fixtures
- Industry leading 3-year limited warranty
- Designed, engineered and assembled in the USA

* Not applicable with VU fixtures

COLORSPASH POOL & SPA LIGHT FIXTURES

ColorSplash-XGW LED
F1CW Model
Pool Light Fixture



Voltage	120VAC or 12VAC
Wattage	33W (Max.)
LED Color	White(6500K)
Lumen Output	1500 lm (max.)
Equivalent	300W Incandescent
Housing	316 Stainless Steel
Lens	Zero Pixelation Glass
Cord Type	120V - 16/3 STWA 12V - 12/3 SJTW
Cord Lengths	30' 50' 100' 150' (200' 300' - 120V only)

ColorSplash-XGW LED
F2CW Model
Pool Light Fixture



Voltage	120VAC or 12VAC
Wattage	58W (max.)
LED Color	White(6500K)
Lumen Output	4270 lm (max.)
Equivalent	500W Incandescent
Housing	316 Stainless Steel
Lens	Zero Pixelation Glass
Cord Type	120V - 16/3 STWA 12V - 12/3 SJTW
Cord Lengths	30' 50' 100' 150' (200' 300' - 120V only)

ColorSplash-XGW LED
S2CW Model
Spa Light Fixture



Voltage	120VAC or 12VAC
Wattage	4W (Max.)
LED Color	White(6500K)
Lumen Output	265 lm (max.)
Equivalent	< 100W Incandescent
Housing	316 Stainless Steel
Lens	Zero Pixelation Glass
Cord Type	120V - 16/3 STWA 12V - 12/3 SJTW
Cord Lengths	30' 50' 100' 150' (200' 300' - 120V only)

HOW TO BUILD A PART NUMBER

PART NUMBER EXAMPLE: LPL-F2CW-120-50-P				
LED Pool/Spa Light Fixture, 500W Equiv., RGB-W, RGB, 120V, 50' Cord, Polished Faceplate				
PREFIX	MODEL #	VOLTAGE	CORD LENGTH	FACEPLATE
LPL	-	-	-	
	insert code into box F1CW for F1CW Model RGB-cool white F2CW for F2CW Model RGB-cool white S2CW for S2CW Model RGB-cool white	insert code into box 120 for 120Volt 12 for 12Volt	insert code into box 30' 50' 100' 150' 200' (120V only) 300' (120V only)	insert code into box P for polished (fits Pentair, Hayward & Jandy Niches) PSQ for polished (fits select Sta-Rite Swim-Quip Niches)

COLORSPASH-VU NICHELESS FIXTURES

ColorSplash-VU LED
R1CW Model
Pool/Spa Fixture



Voltage	12VAC
Wattage	8W
LED Color	RGB-W, Cool White(6500K)
Housing	UV Rated Polycarbonate
Lens	UV Rated Polycarbonate (Clear)
Cord Type	18/2 SJTW
Cord Lengths	30' 50' 100' 150'

ColorSplash-VU LED
R2CW Model
Pool/Spa Fixture



Voltage	12VAC
Wattage	20W
LED Color	RGB-W, Cool White(6500K)
Housing	UV Rated Polycarbonate
Lens	UV Rated Polycarbonate (Clear)
Cord Type	18/2 SJTW
Cord Lengths	30' 50' 100' 150'

HOW TO BUILD A PART NUMBER

PART NUMBER EXAMPLE: LPL-R2CW-12-50			
LED Nicheless Pool/Spa Light Fixture, 20W, RGB-W, 12V, 50' Cord			
PREFIX	MODEL #	VOLTAGE	CORD LENGTH
LPL	-	12	-
	insert code into box R1CW for R1CW Model RGB-W R2CW for R2CW Model RGB-W		insert code into box 30' 50' 100' 150'

COLORSPASH POOL & SPA LAMPS

ColorSpash LXG-W
Pool/Spa Lamp



Product Code	Voltage (AC)	Input Power (max.)	Color Temperature	Lumens
LPL-P3-RGBW-120	120V	17W	RGB+6500K	1577
LPL-P3-RGBW-12	12V	16W	RGB+6500K	1235
LPL-S3-RGBW-120	120V	7W	RGB+6500K	399
LPL-S3-RGBW-12	12V	6W	RGB+6500K	385

HOW TO BUILD A PART NUMBER

PART NUMBER EXAMPLE: LPL-P2-RGBW-12				
LED Replacement Pool Lamp, RGBW, 12V				
PREFIX	SERIES#	MODEL #	VOLTAGE	GASKET TYPE
LPL	-	-	-	-
	P3 for POOL LAMP S3 for SPA LAMP	RGBW for RGBW LAMP	120 for 120Volt 12 for 12Volt	insert code into box Leave box blank for Pentair style SQ for SwimQuip Style H for Hayward Style



The standard in white LED lighting

J&J Electronics PureWhite® LED light fixtures and lamps offer unmatched brightness and energy efficiency for pool and spa lighting. Utilizing high performance Cool White LEDs, the appearance of pool water is improved by producing brilliant, natural looking light; making PureWhite® fixtures and lamps the perfect choice for everything from heavy use commercial application to backyard family pools. Our VU 1.5" nicheless pool and spa fixtures are also available as part of the PureWhite® fixture series. These versatile fixtures easily retrofit into most 1.5" wall fittings.

PureWhite® Fixture Advantages:

- 100W-500W standard incandescent equivalent
- Zero Pixelation Lens*
- Heavy Duty 316 Stainless Steel construction*
- Industry leading 3-year limited warranty
- Designed, engineered and assembled in the USA

PureWhite® Lamp Advantages:

- Reduces energy consumption up to 90%
- Designed for commercial and residential pool and spa use
- Cool white light enhances pool water appearance
- Compatible with most manufacturers fixtures

PUREWHITE POOL & SPA LIGHT FIXTURES

PureWhite LED - F1 Model Pool Light Fixture



Voltage	120VAC or 12VAC
Wattage	39W
LED Color	Cool White (6500K) Warm White (2700K)
Lumen Output	Cool White - 2400 lm Warm White - 1840 lm
Equivalent	300W Incandescent
Housing	316 Stainless Steel
Lens	Zero Pixelation Glass
Cord Type	120V - 16/3 STWA 12V - 12/3 SJTW
Cord Lengths	30' 50' 100' 150' (200' 300' - 120V only)

PureWhite LED - F3 Model Pool Light Fixture



Voltage	120VAC or 12VAC
Wattage	58W
LED Color	Cool White (6500K) Warm White (2700K)
Lumen Output	Cool White - 3900 lm Warm White - 2991 lm
Equivalent	500W Incandescent
Housing	316 Stainless Steel
Lens	Zero Pixelation Glass
Cord Type	120V - 16/3 STWA 12V - 12/3 SJTW
Cord Lengths	30' 50' 100' 150' (200' 300' - 120V only)

PureWhite LED - F5 Model Pool Light Fixture



Voltage	120VAC or 12VAC
Wattage	87W
LED Color	Cool White (6500K) Warm White (2700K)
Lumen Output	Cool White - 4500 lm Warm White - 4150 lm
Equivalent	500W+ Incandescent
Housing	316 Stainless Steel
Lens	Zero Pixelation Glass
Cord Type	120V - 16/3 STWA 12V - 12/3 SJTW
Cord Lengths	30' 50' 100' 150' (200' 300' - 120V only)

PureWhite LED - S1 Model Spa Light Fixture



Voltage	120VAC or 12VAC
Wattage	13W
LED Color	Cool White (6500K) Warm White (2700K)
Lumen Output	Cool White - 500 lm Warm White - 400 lm
Equivalent	100W Incandescent
Housing	316 Stainless Steel
Lens	Zero Pixelation Glass
Cord Type	120V - 16/3 STWA 12V - 12/3 SJTW
Cord Lengths	30' 50' 100' 150' (200' 300' - 120V only)

HOW TO BUILD A PART NUMBER

PART NUMBER EXAMPLE: LPL-F3W-120-50-P				
LED Pool Light Fixture, 500W Equiv. Cool White, 120V, 50' Cord, Polished faceplate for Pentair, Hayward and Jandy Niche				
PREFIX	MODEL #	VOLTAGE	CORD LENGTH	FACEPLATE
LPL	-	-	-	-
	insert code into box F1W for F1 Model Cool White F3W for F3 Model Cool White F5W for F5 Model Cool White S1W for S1 Model Cool White	insert code into box 120 for 120Volt 12 for 12Volt	insert code into box 30' 50' 100' 150' 200' (120V only) 300' (120V only)	insert code into box P for polished (fits select Pentair, Hayward & Jandy Niches) and Cool White P27 for polished (fits select Pentair, Hayward & Jandy Niches) and Warm White PSQ for polished (fits select Sta-Rite SwimQuip Niches) and Cool White PSQ27 for polished (fits select Sta-Rite Swim-Quip Niches) and Warm White M for matte (fits select Sta-Rite Swim-Quip Niches) and Cool White M27 for matte (fits select Sta-Rite Swim-Quip Niches) and Warm White

PUREWHITE POOL & SPA LAMPS

PureWhite-PRO LED Pool/Spa Lamp

Product Code	Voltage (AC)	Input Power	Color Temperature	Lumens	Incandescent Equiv.	Fixture compatibility
LPL-PR2-CW-120	120V	28W	6500K	3144	300W	J&J Electronics TPL-P Series; Hayward® Astrolite™ SP058 Series; Jacuzzi® Full Moon™; Jandy® Pro Series White
LPL-PR2-WW-120	120V	28W	2700K	2921	300W	
LPL-PR2-CW-12	12V	32W	6500K	3295	300W	
LPL-PR2-WW-12	12V	32W	2700K	2964	300W	
LPL-PRHO-CW-120	120V	37W	6500K	4588	500W	
LPL-PRHO-WW-120	120V	37W	2700K	4185	500W	Pentair® Amerlite™ 784 Series; Sta-Rite® Swim Quip™
LPL-M2-CW-120	120V	13W	6500K	1202	100W	
LPL-M2-WW-120	120V	13W	2700K	1332	100W	J&J Electronics TPL-S Series; Hayward® Astrolite™ SP059 Series; Pentair SpaBrite™ Series; Jandy® Pro Series White
LPL-M2-CW-12	12V	15W	6500K	1545	100W	
LPL-M2-WW-12	12V	15W	2700K	1333	100W	



HOW TO BUILD A PART NUMBER

PART NUMBER EXAMPLE: LPL-PR-WHT-120					
LED Replacement Pool Lamp, 300W Equiv. Cool White, 120V, Incl. gasket for Pentair Pool Fixtures					
PREFIX	SERIES #		COLOR	VOLTAGE	GASKET TYPE
LPL	-		WHT	-	
insert code into box		insert code into box		insert code into box	
PR2 for PureWhite-PRO Pool Lamp		120 for 120Volt		Leave box blank for Pentair style	
PRHO for PureWhite-PRO High Output Pool Lamp		12 for 12Volt		SQ for SwimQuip Style	
M2 for PureWhite-PRO Spa Lamp				H for Hayward Style	

PUREWHITE-VU NICHELESS FIXTURES

PureWhite-VU LED
R1W Model
Pool/Spa Fixture



PureWhite-VU LED
R2W Model
Pool/Spa Fixture



Voltage	12VAC
Wattage	8W
LED Color	Cool White (6500K)
Housing	UV Rated Polycarbonate
Lens	UV Rated Polycarbonate (Clear)
Cord Type	18/2 SJTW
Cord Lengths	30' 50' 100' 150'

Voltage	12VAC
Wattage	20W
LED Color	Cool White (6500K)
Housing	UV Rated Polycarbonate
Lens	UV Rated Polycarbonate (Clear)
Cord Type	18/2 SJTW
Cord Lengths	30' 50' 100' 150'

HOW TO BUILD A PART NUMBER

PART NUMBER EXAMPLE: LPL-R1W-12-50			
LED Nicheless Pool/Spa Light Fixture, Cool White, 12V, 50' Cord			
PREFIX	MODEL #	VOLTAGE	CORD LENGTH
LPL	-	12	-
insert code into box		insert code into box	
R1W for R1W Model Cool White		30'	
R2W for R2W Model Cool White		50'	
		100'	
		150'	

In-Ground Incandescent Pool & Spa Light Fixture

J&J Electronics® Incandescent Pool Light Fixtures provide an economical and safe pool lighting plus a rugged construction that is unmatched in the industry.

Features:

- Custom optical lens provides superior light diffusion
- Contemporary housing and faceplate styling
- 1-year limited warranty
- Assembled in the USA



PureWhite-TPL Incandescent Pool Light Fixture

Voltage	120VAC or 12VAC
Wattage	400W, 500W 120V only
Lamp Lumen	4150lm/400W 5400lm/500W
Housing	316 Stainless Steel
Lens	Optical Diffusing Glass
Cord Type	120V - 16/3 STWA 12V - 12/3 SJTW
Cord Lengths	30' 50' 100' 150' (200' 300' - 120V only)

HOW TO BUILD A PART NUMBER

PART NUMBER EXAMPLE: TPL-P120-500-20			
Incandescent Pool Light fixture, 120V, 500W, 50' Cord			
PREFIX	SERIES/VOLTAGE	WATTAGE	CORD LENGTH
TPL	-	-	-
insert code into box		insert code into box	insert code into box
P120 for POOL FIXTURE - 120V		500 for 500W	30'
P12 for POOL FIXTURE - 12V		400 for 400W	50'
			100"
			150"
			200" (120V only)
			300" (120V only)



COLORSPASH XG CONTROLLER

J&J Electronics® XG Controller provides complete control of the ColorSplash pool and spa fixtures right from the palm of your hand.

Features:

- BLUETOOTH enabled
- Cost effective - no need for expensive automation system
- Compact size - replaces an existing light switch
- Free XG Controller APP for Apple and Android devices

Voltage	120VAC 60HZ
Max. Load	400W
Environment	Outdoor Rated; Must use supplied gasket and WET LOCATION RATED outlet box
For Use with	ALL COLORSPASH LED - XG and XG-W Pool and Spa Fixtures - LXG and LXG-W Pool and Spa Lamps - ColorSplash Fountain Fixtures
Order Code	LPL-XG-CTRL-1



GUARDIAN™ SILICONE REPLACEMENT LENS GASKET

Guardian's 100% silicone pool and spa lens gaskets provide superior resistance from chlorine, heat and sunlight for a longer lasting seal than rubber based gaskets.

Features:

- 100% Silicone material; superior chemical and heat resistance
- Designed to last the life of J&J's LED lamps
- Multiple models compatible with most pool and spa lights

ITEM #	FITS FIXTURE MODEL
LPL-G-P	Pentair Amerlite, 784 Series
LPL-M-G-P	Pentair SpaBrite Series
LPL-G-S	Sta-Rite SwimQuip Series 0508
LPL-G-H	Hayward Astrolite Series SP0580
LPL-M-G-H	Hayward Astrolite Series SP0590



J&J POOL TRANSFORMER

J&J Electronics Pool & Spa Transformers are specifically designed to operate in harsh environments, such as high humidity, combined with heat, and chemicals typically found around pools, spas and fountains.

Features:

- Approved to UL Pool Standards
- Easy Installations
- Removeable Mounting Brackets

Housing	Powder-Coated Steel
Wattage	100W 300W
Input Voltage	120VAC 60 Hz
Output voltages	12VAC 13VAC 14VAC
Certification	UL379 Listed
Order Code 100W	TR-100-PP
Order Code 300W	TR-300-PP



LED Fountain Luminaires

Brighten up your water features' appearance with the cleaner and clearer look of our PureWhite® warm white or cool white LED fountain lights. Or perhaps create a more custom color-rich appeal with the multiple colors and shows of our Color Splash® color changing LED luminaires. Our LED Underwater and Wet/Dry Fountain Luminaires create the ideal setting for any water feature environment while significantly reducing energy consumption and maintenance costs, compared to traditional light sources.

Advantages:

- High Lumen Output
- Wet/Dry or Underwater options
- Reduces energy usage by 90%
- Highly corrosion resistant bronze and 316 stainless
- Industry leading 3-year limited warranty
- Designed, engineered and assembled in the USA

UNDERWATER FOUNTAIN LUMINAIRES



PureWhite LED - FLS STAMPED SERIES

Voltage:	120VAC or 12VAC
Wattage:	Large: F1 =39W F3 =58W F5 =87W Small: S1 =13W
Rating:	IP68
Color Temp:	Warm White (2700K) or Cool White (6500K)
Lumen Output:	Warm White: F1L = 1840lm, F3L = 2991lm, F5L = 4500lm, S1L = 400lm Cool White: F1W = 2400lm, F3W = 2991lm, F5W = 4500lm, S1W = 400lm
Beam Spread:	120° Flood
LED Rating:	50,000 hrs
Dimming:	120V only - Contact J&J for instructions
Material:	316 Stamped Stainless Steel Construction
Faceplate:	No Guard: Stamped, polished finish With Guard: Casted, matte finish
Hardware:	316 Stainless Steel

Cable Strain Relief:	Nickel Plated Brass
Overheat Protection:	Integrated thermal cut-off switch
Lens:	Impact resistant tempered glass (frosted)
Cable Length:	10' 30' 50' 100' 150'
Cable Type:	120V = 16/3 STW 105°C 600V Diam: .400" 12V = 12/3 SJTW 105°C 300V Diam: .421"
Environment:	MUST BE SUBMERGED 2" min. 9' max.
Fixture Rotation:	140° (fixture rotation when base is bolted)
Light Swivel:	180° (when used with base)
Certification:	ETL listed for underwater applications
Warranty:	3 Year Limited Warranty

HOW TO BUILD A PART NUMBER

PART NUMBER EXAMPLE: LFF-F3W-120-WG-WB-50						
LED Fountain Light Fixture, 58W Cool White, 120V, With Rock Guard, With Mounting Base, 50' Cord						
PREFIX	MODEL #	VOLTAGE	FACEPLATE	BASE	CORD LENGTH	MATERIAL
LFF	-	-	-	-	-	-
	insert code into box	insert code into box	insert code into box	insert code into box	insert code into box	insert code into box
	F1L for 39W Warm White Fixture F3L for 58W Warm White Fixture F5L for 87W Warm White Fixture S1L for 13W Warm White Fixture F1W for 39W Cool White Fixture F3W for 58W Cool White Fixture F5W for 87W Cool White Fixture S1W for 13W Cool White Fixture	120 for 120Volt 12 for 12Volt	WG for Rock Guard Option NG for No Guard Option	WB for Base Option NB for No Base Option	10' 30' 50' 100' 150'	CB for Cast Bronze CS for Cast 316 SS

PureWhite LED - FS2 STAMPED SERIES

Voltage:	12VAC
Wattage:	21W
Rating:	IP68
Color Temp:	Warm White (2700K) or Cool White (6500K)
Lumen Output:	Warm White: S2L = 1100lm Cool White: S2W = 1200lm
Beam Spread:	15° 25° 40° 120° flood
LED Rating:	50,000 hrs
Dimming:	Non-Dimming
Material:	316 Stamped Stainless Steel Construction
Hardware:	316 Stainless Steel

Cable Strain Relief:	Nickel Plated Brass
Overheat Protection:	Integrated thermal cut-off switch
Lens:	Impact resistant tempered glass (Clear)
Cable Length:	10' 30' 50' 100' 150'
Cable Type:	12/3 SJTW 105°C 300V Diam: .421"
Environment:	MUST BE SUBMERGED 2" min. 9' max.
Fixture Rotation:	140° (fixture rotation when base is bolted)
Light Swivel:	180° (when used with base)
Certification:	ETL listed for underwater applications
Warranty:	3 Year Limited Warranty

HOW TO BUILD A PART NUMBER

PART NUMBER EXAMPLE: LFF-S2L-12-N2-WG-NB-50-SS						
LED Fountain Light Fixture, 21W Warm White, 12V, 25° Optic, With Rock Guard, No Mounting Base, 50' Cord, Stamped Stainless Steel Body						
PREFIX	MODEL #	VOLTAGE	BEAM ANGLE	FACEPLATE	BASE	CORD LENGTH
LFF	-	-	-	-	-	-
	insert code into box	insert code into box	insert code into box	insert code into box	insert code into box	insert code into box
	S2L for Warm White Fixture S2W for Cool White Fixture	N1 for 15° N2 for 25° N3 for 40° FL for flood	WG for Rock Guard Option NG for No Guard Option	WB for Base Option NB for No Base Option	10' 30' 50' 100' 150'	SS



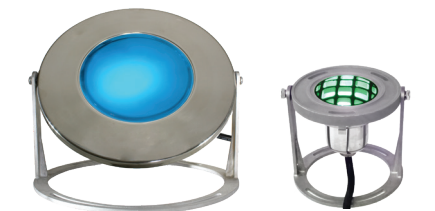
PureWhite LED - FS2 CAST SERIES

Voltage:	120VAC or 12VAC
Wattage:	21W
Rating:	IP68
Color Temp:	Warm White (2700K) or Cool White (6500K)
Lumen Output:	Warm White: S2L = 1100lm Cool White: S2W = 1200lm
Beam Spread:	15° 25° 40° 120° flood
LED Rating:	50,000 hrs
Dimming:	120V only - Contact J&J for instructions
Material:	Cast Bronze or Cast 316 Stainless Steel
Hardware:	316 Stainless Steel

Cable Strain Relief:	Nickel Plated Brass
Overheat Protection:	Integrated thermal cut-off switch
Lens:	Impact resistant tempered glass (Clear)
Cable Length:	10' 30' 50' 100' 150'
Cable Type:	120V = 16/3 STW 105°C 600V Diam: .400" 12V = 12/3 SJTW 105°C 300V Diam: .421"
Environment:	MUST BE SUBMERGED 2" min. 9' max.
Fixture Rotation:	140° (fixture rotation when base is bolted)
Light Swivel:	180° (when used with base)
Certification:	ETL listed for underwater applications
Warranty:	3 Year Limited Warranty

HOW TO BUILD A PART NUMBER

PART NUMBER EXAMPLE: LFF-S2W-120-N2-WG-WB-50-CB						
LED Fountain Light Fixture, 21W Cool White, 120V, 25° Optic, With Rock Guard, With Mounting Base, 50' Cord, Cast Bronze Body						
PREFIX	MODEL #	VOLTAGE	BEAM ANGLE	FACEPLATE	BASE	CORD LENGTH
LFF	-	-	-	-	-	-
	insert code into box	insert code into box	insert code into box	insert code into box	insert code into box	insert code into box
	S2L for Warm White Fixture S2W for Cool White Fixture	120 for 120Volt 12 for 12Volt	N1 for 15° N2 for 25° N3 for 40° FL for 120°	WG	WB for Base Option NB for No Base Option	10' 30' 50' 100' 150'



ColorSplash LED - FLSC STAMPED SERIES RGB

Voltage:	120VAC or 12VAC
Wattage:	Large: F1C = 33W (max) Small: S1C = 7W (max)
Rating:	IP68
Color Temp:	RGB
Lumen Output:	Large : F1C = 847lm (max) Small: S1C = 207lm (max)
Beam Spread:	120° Flood
LED Rating:	50,000 hrs
Dimming:	Non-Dimmable
Material:	316 Stamped Stainless Steel Construction
Faceplate:	No Guard: Stamped, polished finish With Guard: Casted, matte finish
Hardware:	316 Stainless Steel

Cable Strain Relief:	Nickel Plated Brass
Overheat Protection:	Integrated thermal cut-off switch
Lens:	Impact resistant tempered glass (frosted)
Cable Length:	10' 30' 50' 100' 150'
Cable Type:	120V = 16/3 STW 105°C 600V Diam: .400" 12V = 12/3 SJTW 105°C 300V Diam: .421"
Environment:	MUST BE SUBMERGED 2" min. 9' max.
Fixture Rotation:	140° (fixture rotation when base is bolted)
Light Swivel:	180° (when used with base)
Certification:	ETL listed for underwater applications
Warranty:	3 Year Limited Warranty

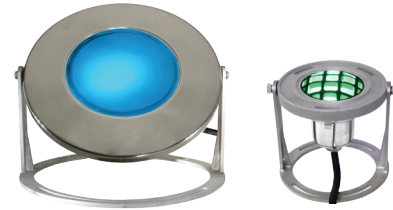
HOW TO BUILD A PART NUMBER

PART NUMBER EXAMPLE: LFF-S1C-12-WG-WB-50						
LED Fountain Light Fixture, 7W Small RGB, 12V, With Rock Guard, With Mounting Base, 50' Cord						
PREFIX	MODEL #	VOLTAGE	FACEPLATE	BASE	CORD LENGTH	MATERIAL
LFF	-	-	-	-	-	-
	insert code into box	insert code into box	insert code into box	insert code into box	insert code into box	insert code into box
	F1C for 33W RGB Fixture (Large) S1C for 7W RGB Fixture (Small)	120 for 120Volt 12 for 12Volt	WG for Rock Guard Option NG for No Guard Option	WB for Base Option NB for No Base Option	10' 30' 50' 100' 150'	

ColorSplash LED - FLSCW STAMPED SERIES RGB-W

Voltage:	120VAC or 12VAC
Wattage:	Large: F1CW & F1CW = 33W (max), Large: F2CW & F2CW = 58W (max) Small: S2CW & S2CW = 4W (max)
Rating:	IP68
Color Temp:	RGB-W Warm White = 2700K Cool White = 6500K
Lumen Output:	Large: F1CW warm white pend. F1CW cool white = 1500lm (max) Large: F2CW warm white pend. F2CW cool white = 4270lm (max) Small: S2CW warm white pend. S2CW cool white = 265lm (max)
Beam Spread:	120° Flood
LED Rating:	50,000 hrs
Dimming:	Non-Dimmable
Material:	316 Stamped Stainless Steel Construction
Faceplate:	No Guard: Stamped, polished finish With Guard: Casted, matte finish
Hardware:	316 Stainless Steel

Cable Strain Relief:	Nickel Plated Brass
Overheat Protection:	Integrated thermal cut-off switch
Lens:	Impact resistant tempered glass (frosted)
Cable Length:	10' 30' 50' 100' 150'
Cable Type:	120V = 16/3 STW 105oC 600V Diam: .400" 12V = 12/3 SJTW 105oC 300V Diam: .421"
Environment:	MUST BE SUBMERGED 2" min. 9' max.
Fixture Rotation:	140° (fixture rotation when base is bolted)
Light Swivel:	180° (when used with base)
Certification:	ETL listed for underwater applications
Warranty:	3 Year Limited Warranty



HOW TO BUILD A PART NUMBER

PART NUMBER EXAMPLE: LFF-F2CW-120-WG-WB-10						
LED Fountain Light Fixture, 58W RGB-W Cool White, 120V, With Rock Guard, With Mounting Base, 10' Cord						
PREFIX	MODEL #	VOLTAGE	FACEPLATE	BASE	CORD LENGTH	MATERIAL
LFF	-	-	-	-	-	-
	insert code into box F1CW for 33W RGBW Warm White (large) F1CW for 33W RGBW Cool White (large) F2CW for 58W RGBW Warm White (large) F2CW for 58W RGBW Cool White (large) S2CW for 4W RGBW Warm White (small) S2CW for 4W RGBW Cool White (small)	insert code into box 120 for 120Volt 12 for 12Volt	insert code into box WG for Rock Guard Option NG for No Guard Option	insert code into box WB for Base Option NB for No Base Option	insert code into box 10' 30' 50' 100' 150'	

WET/DRY FOUNTAIN LUMINAIRES

PureWhite LED - FX2 CAST SERIES

Voltage:	120VAC or 12VAC
Wattage:	18W
Rating:	IP68
Color Temp:	Warm White (2700K) or Cool White (6500K)
Lumen Output:	Warm White: X2L = 816lm Cool White: X2W = 874lm
Beam Spread:	15° 25° 40° 120° flood
LED Rating:	50,000 hrs
Dimming:	120V only - Contact J&J for instructions
Material:	Cast Bronze or Cast 316 Stainless Steel
Hardware:	316 Stainless Steel

Cable Strain Relief:	Nickel Plated Brass
Overheat Protection:	Integrated thermal cut-off switch
Lens:	Impact resistant tempered glass (Clear)
Cable Length:	10' 30' 50' 100' 150'
Cable Type:	120V = 16/3 STW 105°C 600V Diam: .400" 12V = 12/3 SJTW 105°C 300V Diam: .421"
Environment:	Wet / Dry
Fixture Rotation:	140° (fixture rotation when base is bolted)
Light Swivel:	180° (when used with base)
Certification:	ETL listed for underwater applications
Warranty:	3 Year Limited Warranty



HOW TO BUILD A PART NUMBER

PART NUMBER EXAMPLE: LFF-X2L-120-N2-WG-NB-50-CB						
LED Fountain Light Fixture, 18W Warm White, 120V, 25° Optic, With Rock Guard, No Mounting Base, 50' Cord, Cast Bronze Body						
PREFIX	MODEL #	VOLTAGE	BEAM ANGLE	FACEPLATE	BASE	CORD LENGTH
LFF	-	-	-	-	-	-
	insert code into box X2L for Warm White Fixture X2W for Cool White Fixture	120 for 120Volt 12 for 12Volt	insert code into box N1 for 15° N2 for 25° N3 for 40° FL for 120°	WG	insert code into box WB for Base Option NB for No Base Option	insert code into box 10' 30' 50' 100' 150'

» hayward.com » 1-888-976-5567

[Pumps](#) » [Filters](#) » [Heaters](#) » [Sanitization](#) » [Automation](#) » [Lighting](#) » [Water Features](#) » [Cleaners](#) » [Safety](#)

Hayward, Hayward & Design, the H logo, J&J Electronics, the J&J Electronics logo, Color Splash, and Guardian are registered trademarks of Hayward Industries, Inc. © 2022 Hayward Industries, Inc.

LITJJBR022

