

20" OPEN CIRCLE™ DRAIN



Certified to
NSF/ANSI/CAN 50
ANSI/APSP/ICC-16 2017

Open Area
52.6 in²

For SOFA specific flow ratings and specifications, please scan QR code or visit www.aquastarpoolproducts.com/flowcode



FEATURES

- For concrete pools and spas
- One threaded port:
Bottom 2 1/2" Spigot x 2" Socket x 2" NPT
- Certified, Listed, and Labeled in conformance with APSP/ANSI/ICC-16 2017 and NSF/ANSI/CAN 50 standards
- Uniquely engineered design allows for superior debris catching while exceeding UL articulate probe finger and knuckle ASME A112 2008 tests
- Disposable plaster shield prevents debris from entering sump and retains shape during pool finish
- Waterstop around edges prevents water leaks
- Unique circle design is filled with plaster/pebble to blend into pool finish
- Manufactured superior UV-resistant PVC sump
- #316 stainless steel screws
- Online product support including specifications, General Certificate of Conformity, installation instructions, and more
- Replace the round center cap every five years
1 per case

U.S. Patents www.aquastarpoolproducts.com/patents

AVAILABLE COLORS

- OCD101 – White
- OCD117 – Medium Gray

Plaster shields also sold separately, p/n OCD23109, 10 per case

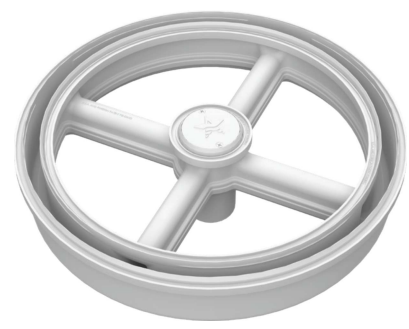
Center logo cap and screws also sold separately, p/n FC08Kxxx, 25 per case

Drain and hydrostatic valve with collector tube, p/n OCDHVxxx, 1 per case

VGBA 2017 Compliant

Unblockable!

NEW No second drain or SVRS required

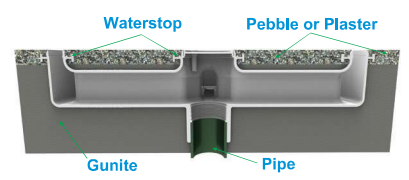


Top view of completed Open Circle™ drain



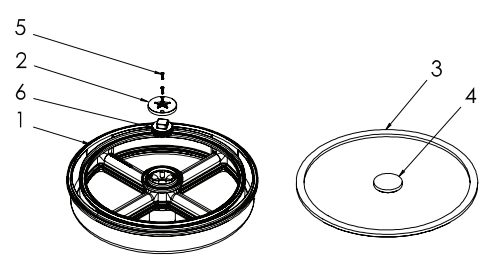
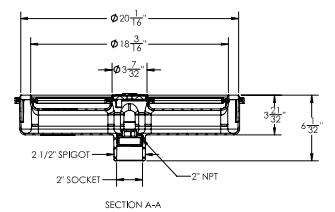
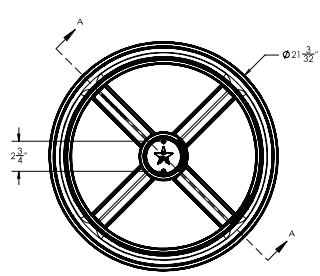
Optional Self-Contained Hydrostatic Valve
p/n HVCxxx
See page 91

Optional T-Wrench
p/n FC16102
See page 227



Unique waterstop protects against leaks

Part # OCDxxx



1. Sump Body, 20" Open Circle
2. Center Cap, 20" Open Circle
3. Plaster Shield, 20" Open Circle
4. Plaster Shield, Inner, 20" Open Circle
5. 10-32 X 3/4", Flat Head Phillips, 316 SS, Qty 2
6. 2" NPT Plug