

# BAD AXE SLIDES

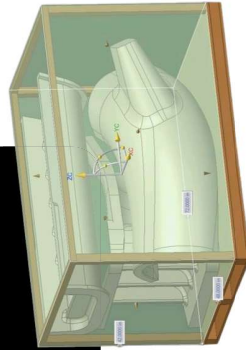
## Features

**Safety First** – Deep flumes + Integrated wrap-around handrails keep every rider secure



**Peace of Mind** – 4 Year Warranty for Authorized Dealer Installs | 3 Year Warranty for DIY Installs

**Space Efficient Nested Packaging**– One box packaging streamlines shipping & storage



**Reduced Freight Costs & Damage with One-Box Shipping** - Innovative design reduces freight volume by up to 40 %

### NEW QUARTZ FINISHES

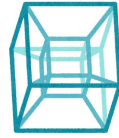


Blue Quartz    Silver Quartz



### Box Dimensions:

L: 72"  
W: 48"  
H: 42"  
Pallet: 4"



Introducing

# BAD AXE Pool Slides



**New!**

Introducing the **BAD AXE X6** and **BAD AXE X7** — the next generation of poolside fun, born in Bad Axe, Michigan.

MADE IN 

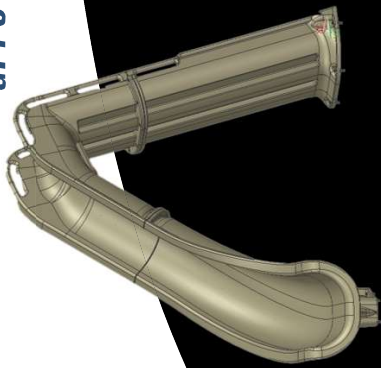


[www.global-poolproducts.com](http://www.global-poolproducts.com)



# BAD AXE X7

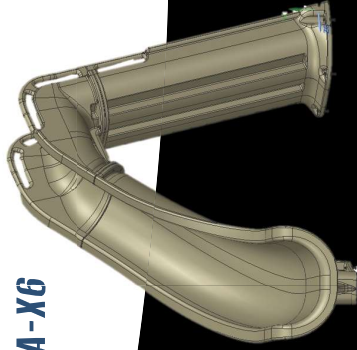
GPPS-BA-X7



Height: 7'4"  
Length: 9'2"

# BAD AXE X6

GPPS-BA-X6



Height: 6'0"  
Length: 7'9"



## BAD AXE Engineering

**No-Leak Gasket Seal & Flange System** – Precision engineered seals ensure long lasting, leak-free performance

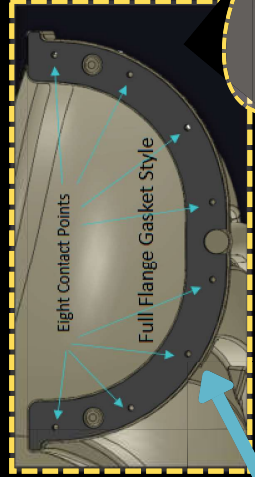
**Advanced Thru Bolt Gasket Design** – Secure fit enhances durability and watertight integrity

**Effortless Assembly Design** – Quick straightforward installation with minimal tools required

**Single Bolt Style System** – Simplifies assembly taking the guesswork out of the process

**Precision Alignment Connections** - Lego-style design ensures seamless, accurate fit every time

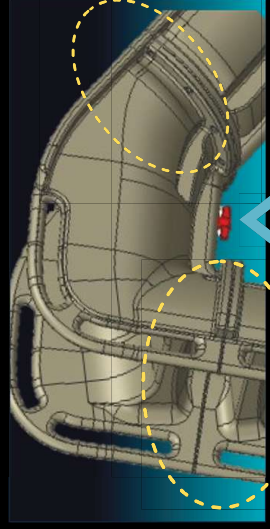
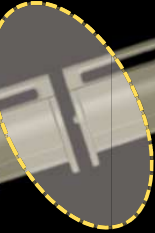
**Reinforced Ribbed Construction** – Provides exceptional structural support for maximum stability and safety



Eight Contact Points

Full Flange Gasket Style

**Integrated Flow Diverter** – Built-in diverter optimizes water distribution for improved experience



**Optional Shut-Off Valve Housing** – Added flexibility for water flow control

Stub Up 1

Stub Up 2

**dual Stub Up Options** – Versatile plumbing configurations to accommodate diverse installations



Scan Me!