

inverFLOW PLUS



A NEW STANDARD FOR POOL PUMPS

Madimack's inverFLOW PLUS is the next evolution in pool pump technology, delivering enhanced power and superior performance alongside the energy-saving benefits of full-inverter technology.

Operating whisper-quietly at speeds as low as 33dB, it features Wi-Fi connectivity for effortless control, Skimmer Mode for a pristine pool surface, dual voltage compatibility, and a market-leading 5-year warranty. The inverFLOW PLUS sets a new benchmark in efficiency, reliability, and convenience.



InverMAC Technology

Enhanced inverter motor for efficient performance and motor speed control



DC Brushless Motor

Permanent magnetic motor for long lasting energy efficiency



Advanced Sound Suppression Technology

Quiet operation down to 33 dB



4 Timers For Daily Operation

Full control capabilities, with multi speed and multi timer function



Skimmer/Boost Mode

Activates for 5 minutes every hour to optimize surface cleaning efficiency



Active Energy Monitor

Monitor and manage operation efficiency



Running Capacity From 30%~100%

Full inverter technology for maximum control—30%–100% set points



Wi-Fi Capabilities

Control your pump operation remotely



Dual Voltage

Enabling flexible installation and ensure consistent performance regardless of the voltage

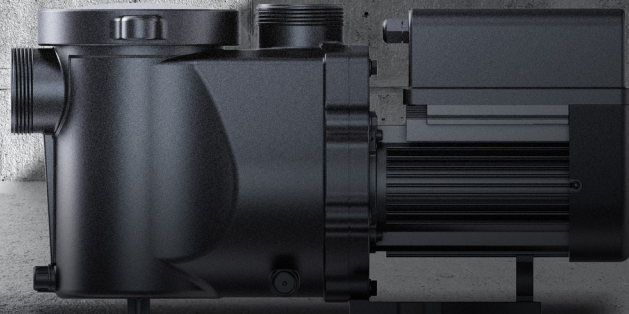


madimack

Powered by



TECHNICAL PARAMETERS



| MODEL | InverFlow Plus 1 HP Dual Voltage Inverter VSP | InverFlow Plus 1.5 HP Dual Voltage Inverter VSP | InverFlow Plus 2 HP Dual Voltage Inverter VSP |
|---------------------------------|---|---|---|
| Power | | | |
| Voltage range | 90-250v 50/60hz | 90 - 250v 50/60hz | 90 - 250v 50/60hz |
| Total Horse Power (THP) | 1 | 1.5 | 2 |
| Input kilowatt (kW) | 1 | 1.35 | 1.8 |
| Running Amps (115v/230v) | 8.3 - 4.6 | 8.9 - 5.9 | 9.6 - 6.5 |
| Flow | | | |
| Qmax - GPM | 112 | 125 | 136 |
| Qmax L/Min | 424 | 473 | 515 |
| Hmax - Feet | 59 | 65 | 67 |
| Hmax - Metre | 18 | 20 | 20.4 |
| Flow @ 26Ft (GPM) | 97 | 119 | 132 |
| Flow @ 8m (L/min) | 367 | 450 | 500 |
| Flow @ 33Ft (GPM) | 79 | 105.7 | 123 |
| Flow @ 10m (L/min) | 300 | 400 | 466 |
| Specifications | | | |
| Dimensions (Inch) | 21" 7/16' x 6" 5/8' x 9" 15/16' | | |
| Dimensions (mm) | 590 x 255 x 325 | | |
| Packaging (inch) | 23" 1/4' x 10" x 12" 3/4' | | |
| Packaging (mm) | 590 x 255 x 325 | | |
| Weight (lbs) | 32lb | 32lb | 34lb |
| Weight (kg) | 14.5kg | 14.5kg | 15.5kg |
| Pipe connections (inlet/outlet) | 2" BSP | | |
| Noise level 30% Speed | 32.9 | 35.8 | 38.3 |
| Noise level 100% Speed | 56.1 | 56.7 | 57.4 |

*Specifications displayed refer to 230v supply and can vary with voltage fluctuations please visit www.madimack.com for further specifications.

